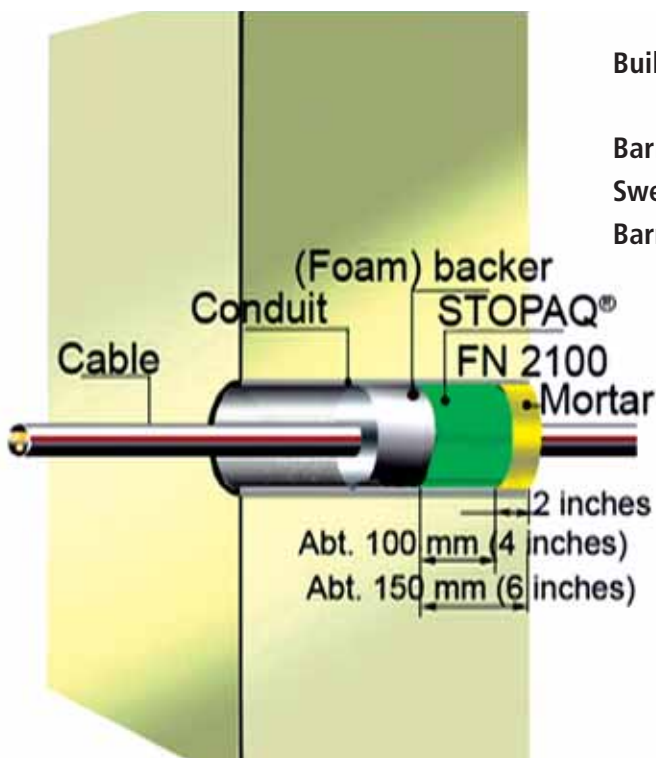


→ FN2100 APPLICATION MANUAL



- | | | |
|---|---|--|
| 1 Stopaq® FN2100-310 ml
art.code: 2000 | 4 Application Handtool
500 ml art.code: 1000 | 8 Flexible Application Nozzle
art.code: 1047 |
| Stopaq® FN2100-0,53 kg
art.code: 2002 | 5 Application Nozzle
art.code: 1042* | 9 Brush
art.code: 1042* |
| 2 Stopaq® Mortar-0,5 kg
art.code: 1105 | 6 Scraper
art.code: 1042* | 10 Application Handtool
310 ml art.code: 1002 |
| 3 Stopaq® FN2100-2 kg
art.code: 2005 | 7 Coupling
art.code: 1042* | * applicationset (1042) |

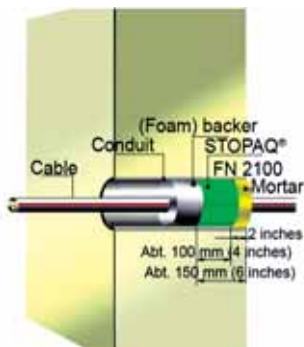


Built-up STOPAQ FN2100 Waterplug system:

- | | |
|--------------------------|---------------------------|
| Barrier 1: | Suitable Barrier Material |
| Swelling sealant: | STOPAQ® FN2100 (10cm) |
| Barrier 2: | STOPAQ® Mortar |

STOPAQ EUROPE B.V.

Gasselterstraat 20
9503 JB Stadskanaal
P.O. Box 285
9500 AG Stadskanaal
The Netherlands
T +31 (0) 599 696170
F +31 (0) 599 696177
info@stopaq.com
www.stopaq.com



- 1** Built-up STOPAQ® FN2100 Waterplug system:
 Barrier 1: Suitable Barrier Material
 Swelling sealant: STOPAQ® FN2100 (10cm)
 Barrier 2: STOPAQ® Mortar



- 2** It is recommended to preheat the cartridges till 30°C max. This makes the gun application easier.



- 3** Clean the duct properly by a brush (art. 2125) and scotch brite. Watercleaning afterwards is optional. STOPAQ® adheres to wet surfaces. The adhesion can be improved if the cable and ducts are pre-applied with some FN2100.



- 4** Wrap the cables with suitable barrier material, like foamtape. Make sure that 15cm is open for the sealing.



- 5** Push the foamtape back by a 'stick'. Distance from the opening till the foamtape must be minimally 15cm. Make sure that the foamtape seals the ducts properly.



- 6** Lift the cables slightly and apply FN2100 by an appropriate application gun. By using the flexible nozzle every area can be filled easily. Apply minimally 10cm FN2100. After putting in the flexible nozzle at the correct depth, hold the gun and press the gun to form a big ball of compound. Always start at the backside underneath to embed the cables. Slowly pull back the gun.



- 7** Apply till 5cm before the opening, separate the cables and press them in the compound. Fill the duct completely, also between the cables. Make sure that all air is out.



- 8** Before applying the mortar, make sure there is no FN2100 present at that part. Good cleaning with Scotch Brite is recommended. STOPAQ® Mortar E-474 is flame retardant and offers a decorative finish. Only for application at basement side.



- 9** Mix the Mortar with 300 ml water until it forms a mouldable ball, fill the remaining 50mm opening.



- 10** If the ball is too dry, simply add some more water. The ball should not fall apart.



- 11** Fill the remaining 5cm with the Mortar. Press sufficiently. Again, start downwards and press the Mortar between the cables.



- 12** Finish the outside of the Mortar smoothly with a scraper and a little water.